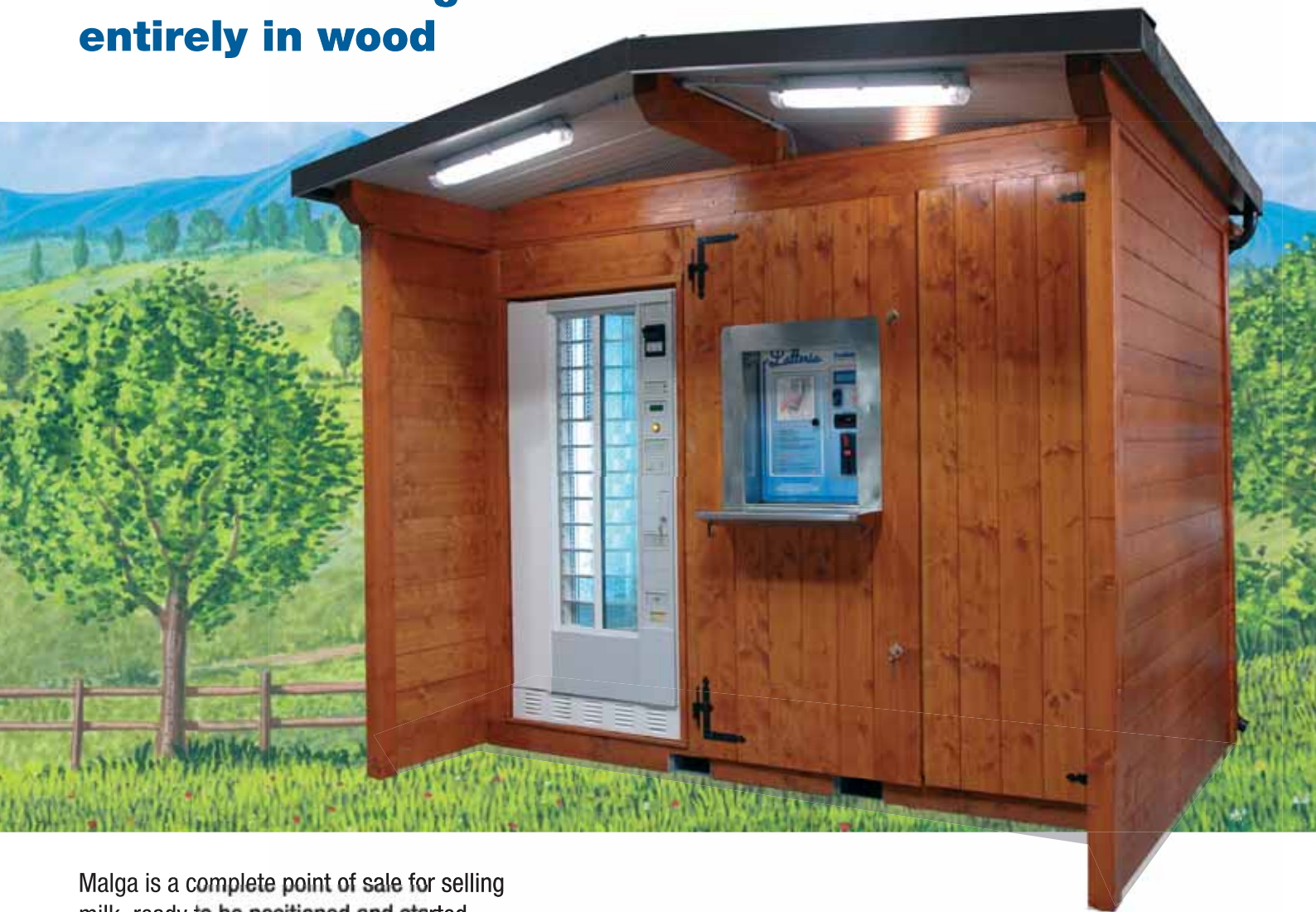


MALGA

**The milk vending machine
entirely in wood**



Malga is a complete point of sale for selling milk, ready to be positioned and started.

Thanks to its **steel bearing structure**, it can be lifted and transported together with the dispenser. It is provided in painted wood and available in pale green or (honey) wood colour.

With front access doors, it is provided with a third vane for the storage of materials and cleaning products. Easily positioned on a flat platform, it only needs to be connected to a 220 V power supply.

Latteria
ProMeteA

The vending machine range for all needs.

MALGA

Wood structure reinforced with steel frame at the base.

Liftable, with distributors.

Front access doors with keylocks.

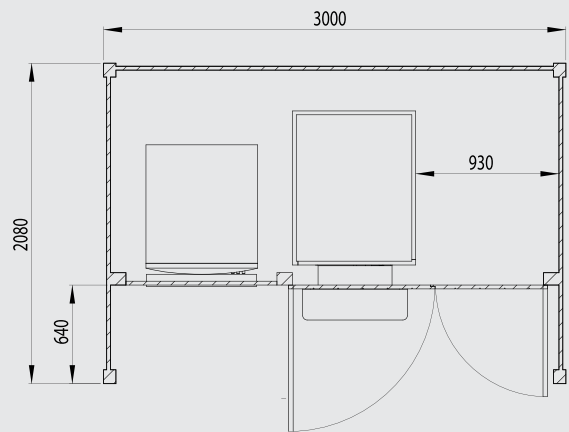
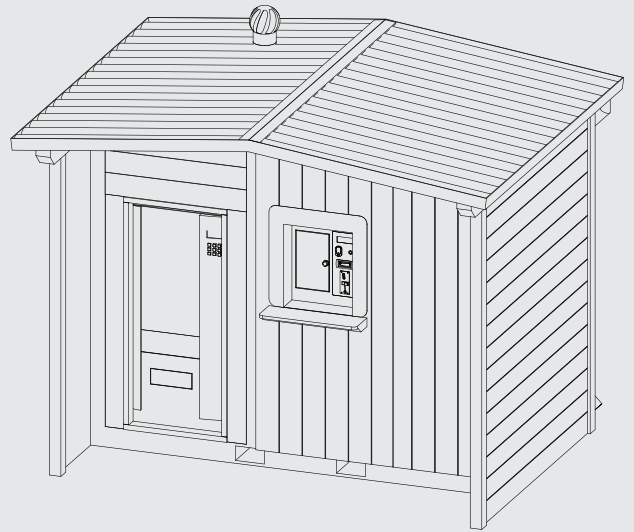
Electrical system with interior and exterior lights with twilight powerup.

Airblade system to prevent flies.

Dispenser frame in stainless steel with support shelf.



MALGA: OVERALL DIMENSIONS (mm)



MALGA: STANDARD EQUIPMENT

Milk distributor model Box 300 with two 300 l tanks.

100 units empty bottles distributor.

Upon request it can be provided with a refrigerated distributor for cheese.

Prometea reserves the right to introduce necessary modifications and improvements to its products if time is necessary • Prometea distributors conform to the EEC Norms and are certified by the Metric Authority. Prometea and Latteria Prometea are registered trademarks.

Retailer:

Latteria
Prometea

The vending machine range for all needs.

Via Stucchi, 16 - Cornate d'Adda (MI)
phone +39.039.6060790 fax +39.039.6887983
info@prometea.it - www.prometea.it